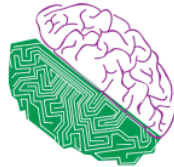


Department of Interdisciplinary Activities, New Technologies Research Centre
Department of Cybernetics, Faculty of Applied Sciences
Department of Philosophy, Faculty of Philosophy and Arts
at University of West Bohemia in Pilsen

Announcement of International Conference



Beyond AI

Interdisciplinary Aspects of
Artificial Intelligence

December 8–9, 2011

Pilsen, University of West Bohemia

Registration opens:	October 1st, 2011
Deadline for submission of extended abstracts:	October 30th, 2011
Notification of acceptance/rejection:	November 15th, 2011
Deadline for submission of full papers:	January 31st, 2012

The conference will aim to shed light on philosophical, ethical, social, esthetical, medical and also technical issues that constitute current conceptions of AI. Transdisciplinary dialogue between experts from engineering, natural sciences and humanities is strongly encouraged. Contributions to the following topics are welcomed:

- *AI Applications in Real Life* (scope and limits of applicability, harmonization of implementation, the pros and cons of practical usefulness, ambient intelligence, reality of second life)
- *AI for Human Health* (patient's experience with intelligent prosthetics, Eliza as a psychotherapist, models for psychiatry, biomedical ethics)
- *AI and Art* (creative facets of designing AI products, aesthetics of computer-human contacts, cyberpunk art, machines as artists, science fiction)
- *AI and Mind* (artificial and natural thought, mind and consciousness, semiotic models, self-reference, emergence)
- *AI versus IA* (intelligence amplification, human cognitive enhancement, brain-computer interface, embodied cognitive science)
- *Man-Machine Coexistence* (man-machine communication, individual and social coexistence of human and machine, transhumanism, issues of prospective cohabitation and/or fight)
- *Fringe AI* (singularitarianism, mind-uploading, simulation argument, cyborg theory)

The official language of the conference is English. The extended abstracts will be published in proceedings reviewed by the Programme Committee. The first phase of the review process will select extended abstracts suitable for presentation at the conference. Full papers will then be submitted to the second phase of the review process after the conference so as to reflect results of the transdisciplinary dialogue that will take place in the course of the conference. Selected full papers will be offered to Springer for publication in the Lecture Notes in Artificial Intelligence (LNAI) series.

Programme Committee

Jiří Beran (Faculty of Medicine, Charles University, Pilsen)

Jan Betka (First Faculty of Medicine, Charles University, Prague)

Nick Campbell (School of Linguistic, Speech and Communication Sciences, Trinity College, Dublin)

Luis Hernández Gómez (Signals, Systems and Radiocommunication Department, Technical University of Madrid)

Ivan M. Havel (Centre for Theoretical Study, Prague)

Søren Holm (School of Law, University of Manchester)

Jozef Kelemen (Institute of Computer Science, Silesian University, Opava)

Vladimír Mařík (Faculty of Electrical Engineering, Czech Technical University, Prague)

Peter Mikulecký (Faculty of Informatics and Management, University of Hradec Králové)

Josef Psutka (Faculty of Applied Sciences, University of West Bohemia, Pilsen)

Raúl Santos de la Cámara (Telefónica I+D, Madrid)

Yorick Wilks (Florida Institute for Human & Machine Cognition)

Enrico Zovato (Loquendo, Torino)

Guidelines for the submission of extended abstracts

Extended abstracts (up to 4 pages in the Springer LNCS format, including references) must be written in English and be prepared for blind review process, with all self-reference and personal data suppressed. Abstracts should contain not only the issue discussed or the position defended but also indicate the outline of the argument. Submission has to be made through the Beyond AI website.

Funding for students

Funds covering the domestic travel and accommodation expenses will be available for students whose extended abstracts are accepted by the Programme Committee. For application for this funding, please contact the Organising Committee in advance.

moa@ntc.zcu.cz

<http://beyondai.zcu.cz>

This conference is supported by the ESF project “Interdisciplinary Partnership for Artificial Intelligence” (CZ.1.07/2.4.00/17.0055)



europa
european
social fund in the
czech republic



EUROPEAN UNION



MINISTRY OF EDUCATION,
YOUTH AND SPORTS



INVESTMENTS IN EDUCATION DEVELOPMENT